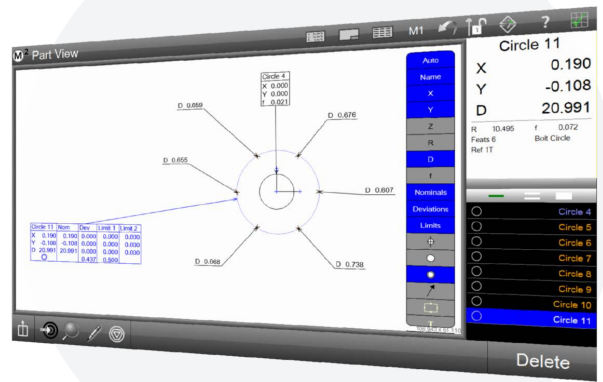


Introducing M2 Version 2!

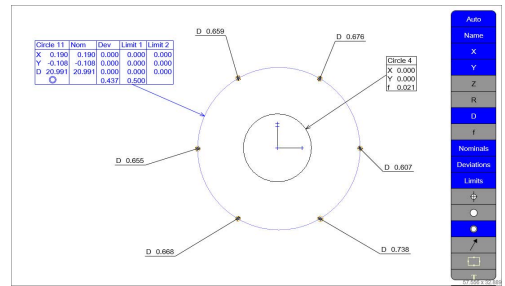
All new functionality added to the already powerful M2 software.



- ✓ Advanced Part View markup.
- ✓ Multi-run analysis via a Runs Database.
- ✓ Customize your reports with the Template Editor

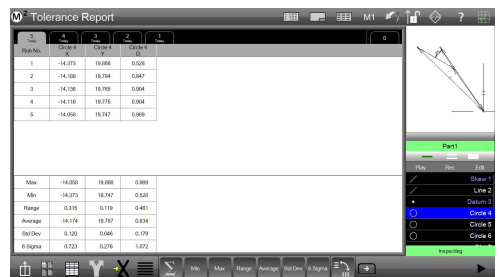
Part View Markup and Annotation

Gain access to instant feature markup tools using the part view markup menu. Add customized feature data to your part view, including measurement results and tolerance information.



Runs Database and Statistics

Track and analyze measurement run results for your part programs. View past measurement results quickly and easily using the tabbed runs database program results view. Perform quick cross run analyses of feature results using the Pivot data mode. Add quick statistical feedback including min, max, range, average, and 6 sigma to your data for more detailed analyses of result trends and measurement repeatability.



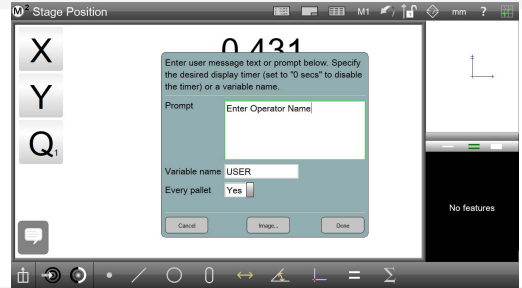
Report Template Editor

Report templates can now be created and assigned to meet the formatting requirements of specific part inspection routines. Customize and save multiple report template styles for use in various part programs.



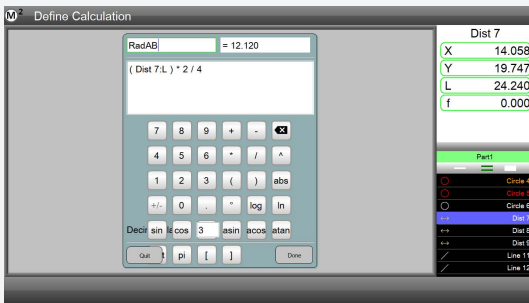
Enhanced User Message Step

The User Message Step has been enhanced to support variable based "ask" prompts. Operator entered data can now be stored in a variable, and reported throughout the system user interface, and measurement reports.



Formula Evaluation

Generate custom formula calculations utilizing measurement result data and standard mathematical operators and trig functions. Perform simple and complex measurement calculations directly in the M2 software.



MetLogix M Series Features Matrix	M1 Series	M2 Series	M3 Series
Optical edge detection	✓	✓	✓
Geometric functions	✓	✓	✓
XY, XYZ or XYQ axis support	✓	✓	✓
Data Reporting/Export	✓	✓	✓
Partview Display		✓	✓
Part programming and playback		✓	✓
Tolerancing		✓	✓
Feature annotation		✓	✓
Video edge detection			✓
Video image archive			✓
Image markup			✓

Help and Resources

Please visit the support section at www.metlogix.com for access to Metlogix product documentation.

Watch tutorial videos for popular Mx functions at <http://www.youtube.com/metlogix>

Join the discussion on Facebook, search "Metlogix".

Contacts

175 Canal Street, Suite 503, Manchester, NH 03101 USA

Tel: 603.836.4452

Fax: 603.369.6499

Email: support@metlogix.com

Web: www.metlogix.com